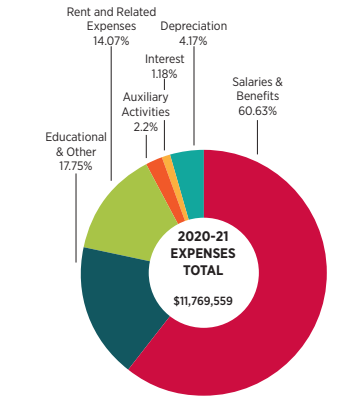
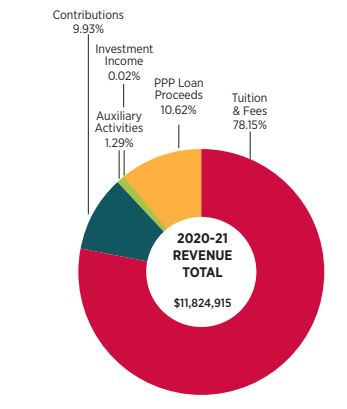




WHERE DO YOUR KINGSLEY CONTRIBUTIONS GO?

Tuition is our primary source of income and covers approximately 83% of the annual operating budget. Tuition income is supplemented by community-led philanthropy.



Each tuition dollar is allocated within a budget approved by the Board of Trustees to fulfill our School's mission.

Tuition is assessed annually. Deposits for next year are due mid-February. The first tuition payment is due as early as May for the year ahead.

| | Charitable Contributions | | | | Parent Association (PA) | |
|-------------------|--|--|---|---|---|--|
| | Annual Fund | Financial Aid | Capital Campaign Giving | Planned Giving | PA Dues | Winter Break Teacher Gifts |
| Purpose | The Annual Fund is the School's highest fundraising priority and 100% parent and faculty/staff participation is always the goal! The Annual Fund fuels academic, social-emotional, and co-curricular enhancements, professional development, campus safety, field trips, and more. | For 2023-2024, \$630,000 was budgeted for need-based tuition assistance. This supports 10-15% of this year's students, with an average grant of \$18K. | Our Strategic Plan outlines an exciting vision for our School's future. Capital investment will be essential for Kingsley to enhance our programs and facilities. | With planned gifts, you can elevate your impact at Kingsley, create a legacy of generosity, and minimize tax liability. | Yearly dues of \$90 per student fund all PA activities. | The PA organizes an optional, anonymous cash contribution drive. Gifts are pooled and distributed evenly among teachers. |
| Impact | Your Annual Fund gift will have an immediate and direct impact on the experience of our students and teachers this school year. | Philanthropy is the sole source of cash funding for tuition assistance, since Kingsley has no endowment. | Capital campaign gifts provide support for transformational strategic priorities. | Planned gifts benefit successive generations of Kingsley students, ensuring the School's longterm sustainability. | The PA's mission is to foster a strong School community that supports, engages, and connects parents/guardians, students, faculty, and staff. | These gifts show our appreciation and thanks for teachers, who are always very grateful! |
| Timeframe | Most Annual Fund and Financial Aid gifts and pledges are made prior to December 31, with final payments due by June 30. Strategic priority funding timelines can be discussed with the Chief Advancement Officer. | | | Planned gifts are encouraged and appreciated at any time of the year. | PA dues are included in tuition payments for the coming School year. | Teacher gifts are requested in early December. |
| Solicitation | This year, Kingsley will synchronize outreach for the Annual Fund, Financial Aid, and strategic priorities to provide greater transparency for you and for Kingsley. The School partners with Development volunteers to solicit contributions through email, snail mail, text, phone calls, in-person conversations, and social media. | | | To learn more, please contact the Chief Advancement Officer at 617-226-4902. | Dues are included in your tuition bill and paid through Tuition Management. | The PA will invite teacher gifts in early December. |
| Methods of Giving | Gifts may be made by credit card, check, bank wire, appreciated securities, and Donor Advised Funds. Employer Matching can elevate your impact. Kingsley is charged a processing fee for gifts by credit card, which donors have the option to cover at their discretion. | | | Planned gifts include bequests and charitable trusts, as well as gifts from retirement plans and life insurance. | Dues are included in your tuition bill and paid through Tuition Management. | Venmo |
| Designation | Annual Fund dollars are unrestricted. They are used during the current fiscal year to directly support our day-to-day operations. | All gifts designated for Financial Aid fuel need-based tuition assistance. | Capital Gifts are allocated per the terms agreed upon by donors and the School. | Planned gifts can be designated by the donor to support a specific area within the School. | The PA helps knit our community together, nurturing family connections and enriching our shared Kingsley experiences. | Winter Teacher gifts show our love and appreciation for teachers. |
| Tax Deductible? | Yes | Yes | Yes | Please consult your tax professional. | No | No |